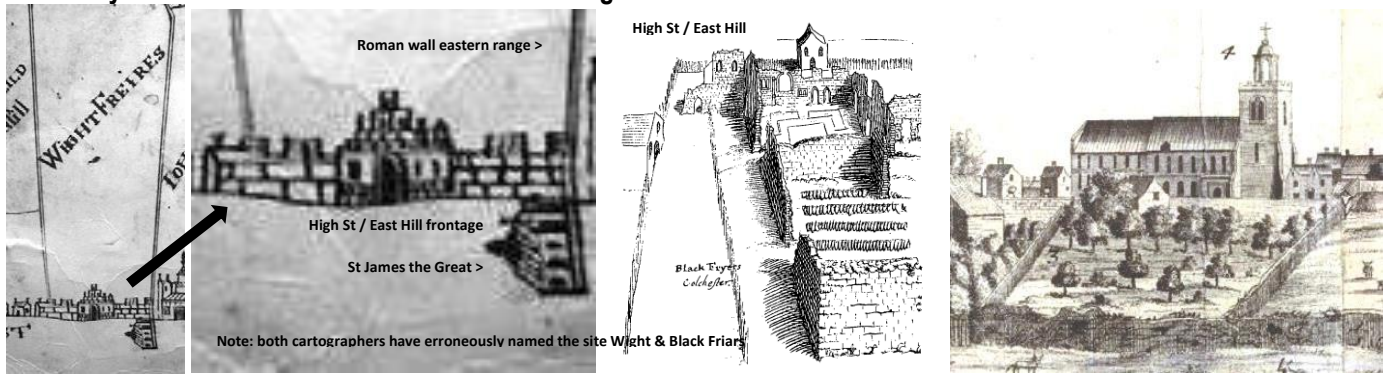


Grey Friars – then and now – the grounds

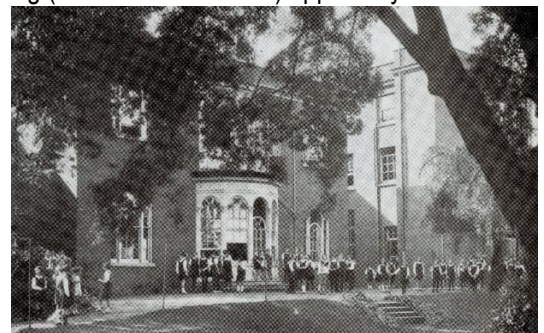
The Grey Friars site once covered the entire rectangle of land within the north-east corner of Colchester's Roman wall.



Circa 1622 • view from south (Essex Record Office); 1718 • from north (Stukely); 1724 • view from north by Pryer (British Library)

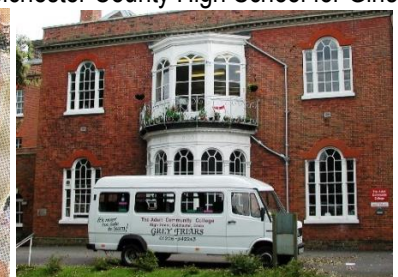
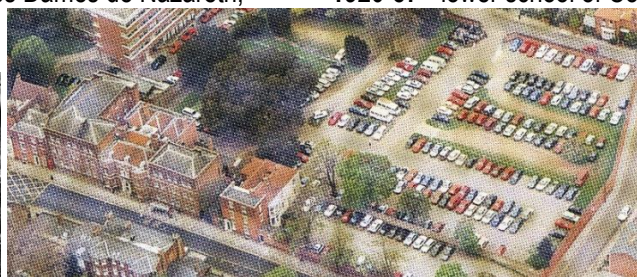


Circa late 1800s • an early photograph (Colchester Museum) ... and an engraving (Essex Record Office) apparently based on it.

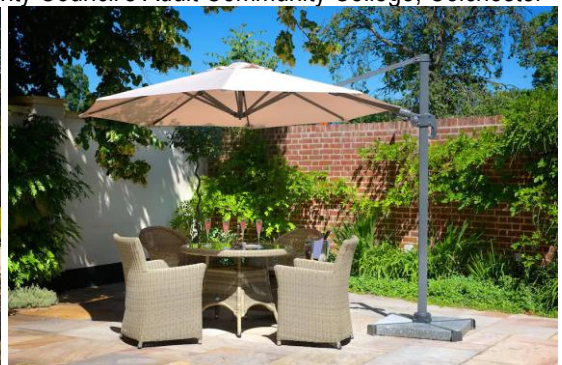


1904-19 • convent & school for Les Dames de Nazareth; 1920-57 • lower school of Colchester County High School for Girls

1850s to date • Roman/Castle roads:



1965-2005 • Colchester Borough's Senior Evening Institute, then Essex County Council's Adult Community College, Colchester



The present day • the GreyFriars Hotel