

Grey Friars Colchester – Then and Now



then: 1903 • Hillcrest, Grey Friars & All Saints separated by garden and yard



THE CONVENT GREY FRIARS COLCHESTER

then: 1904 • Extended to form Convent and School

and now: all together as Grey Friars Hotel





County High School, Colchester, - Dining Hall. (Greyfriars)

then: Colchester County High School dining hall 1920-1957

and now: GreyFriars Hotel Reception





Grey Friars, Convent, Colchester High Altar.

then: 1904-1919 Convent School Chapel



then: 1920-1957 CCHS School Hall & Gymnasium



then: Adult Community College Main Hall 1965-2005



and now: GreyFriars Hotel Cloisters Restaurant



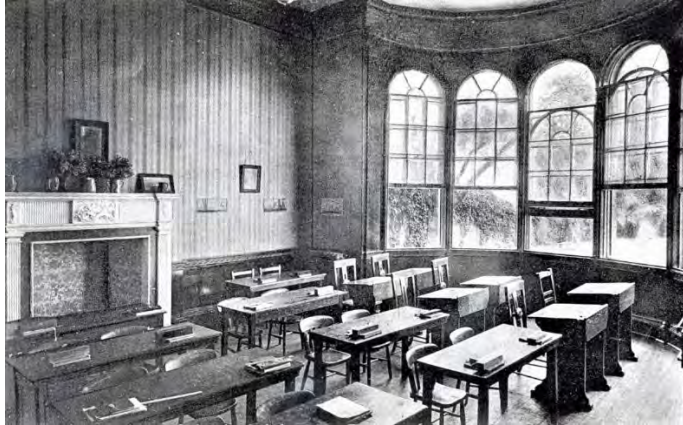


THE ADULT COMMUNITY COLLEGE, COLCHESTER
GOVERNORS, STAFF AND COMMITTEES ~ 1996

then: Adult College rear entrance yard 1965-2005

and now: GreyFriars Hotel bar terrace





then: Convent School dining room / CCHS classroom / adult college lecture room

and now: Hotel's Baroque Bar





"Grey Friars," Convent, Colchester: Corridor and Staircase.

then: Convent / schools / college first floor landing leading to classrooms
and now: Hotel suites access





then: Side passage between All Saints & Grey Friars leading to High St.

and now: Hotel access atrium





County High School, Colchester (Greyfriars)

then: CCHS Headmistress Study

and now: the hotel's Library Lounge

